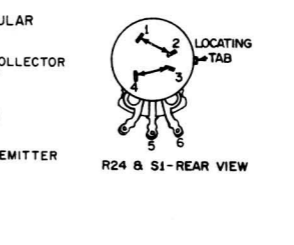
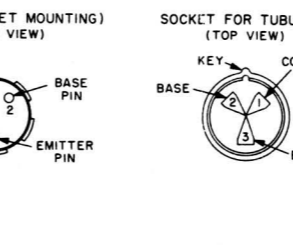
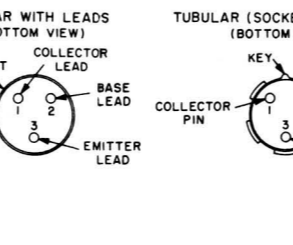
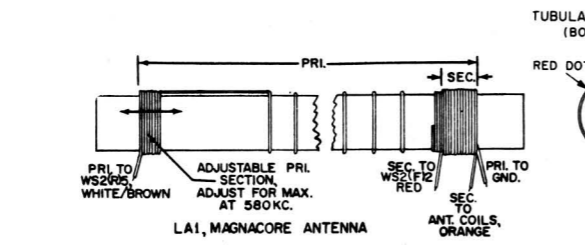
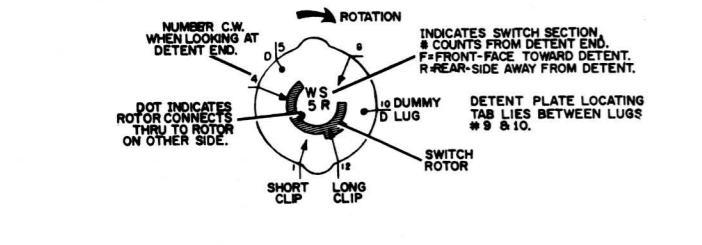
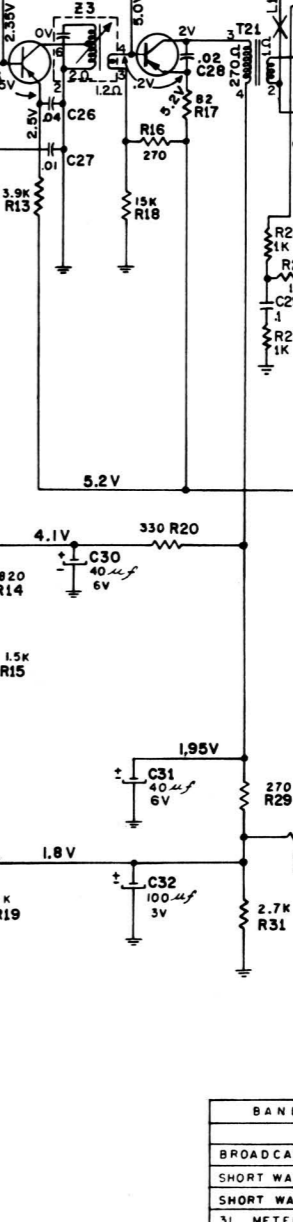
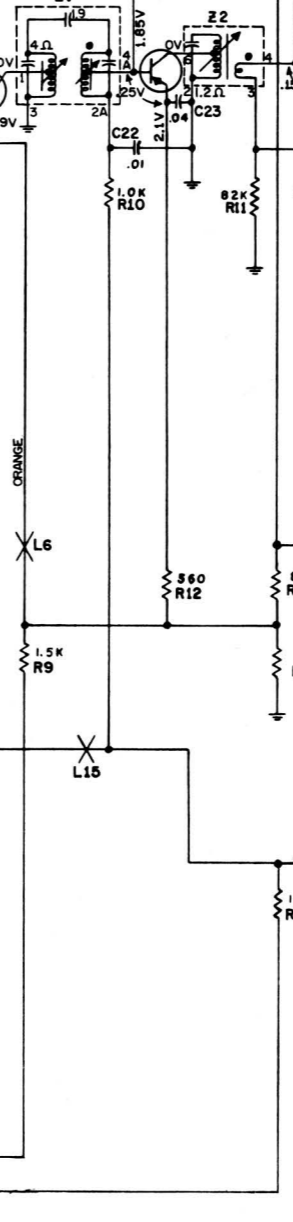
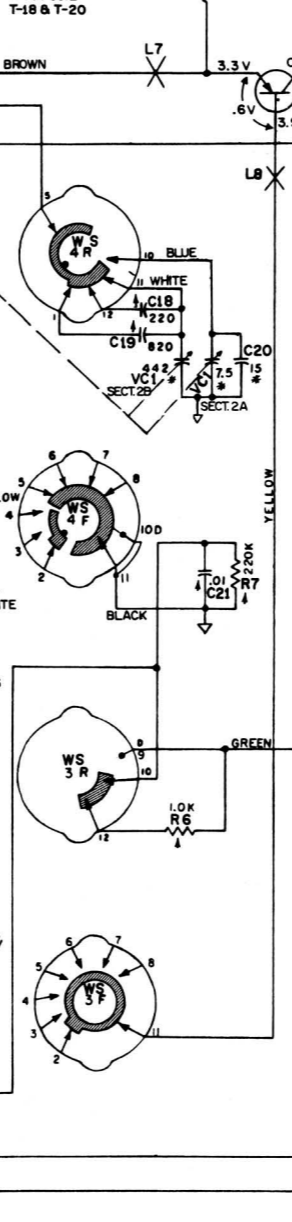
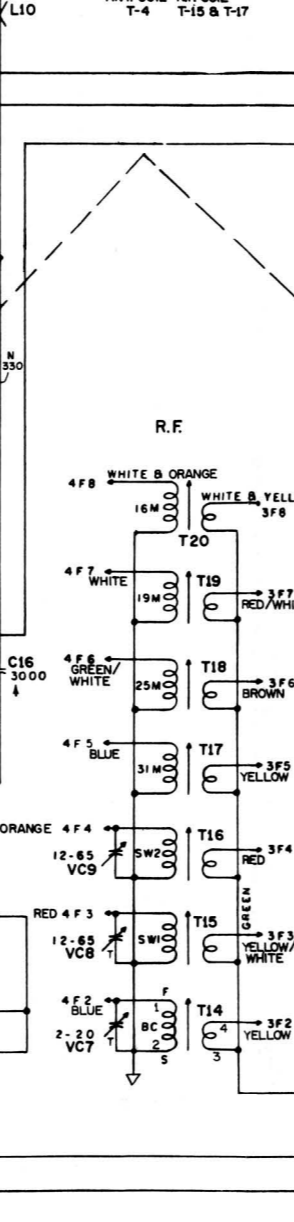
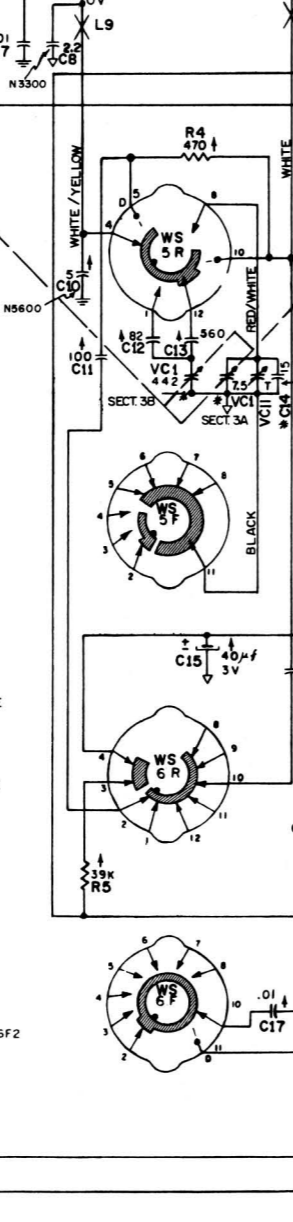
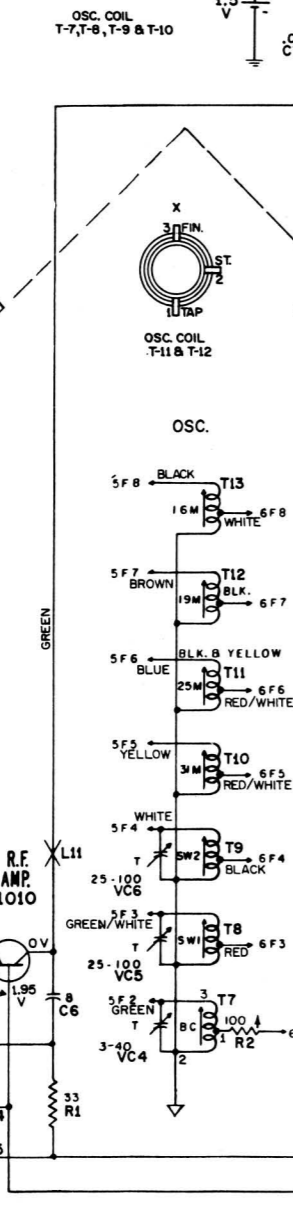
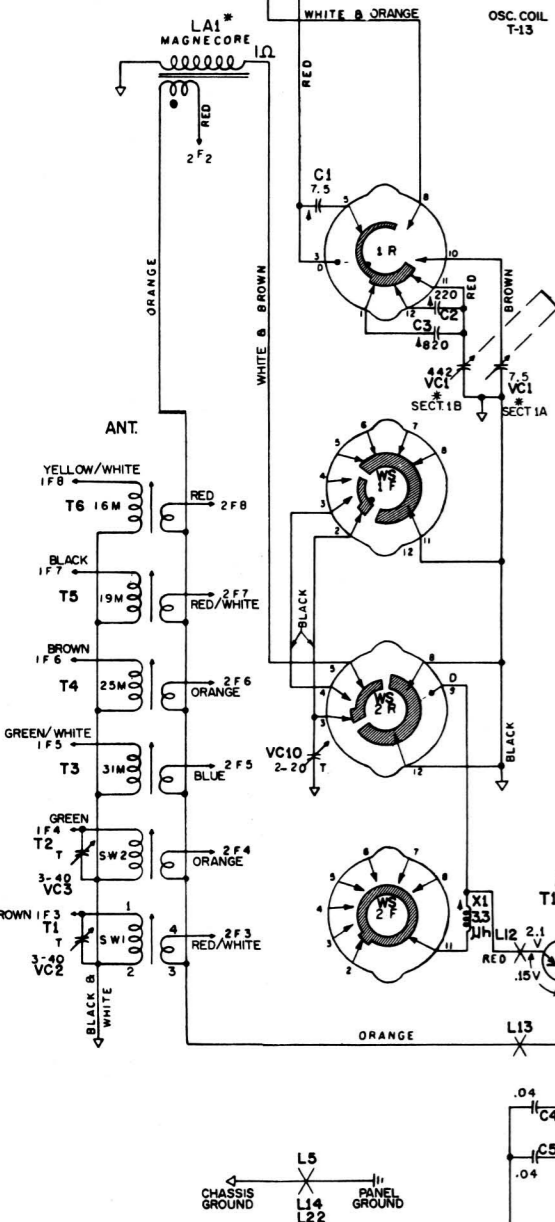


COIL TERMINAL IDENTIFICATION, LUG END VIEW:  
"X" INDICATES POSITION OF LOCATING EAR.



BAND	NOMINAL COVERAGE
BROADCAST	540 - 1600 KC
SHORT WAVE 1	2.0 - 4.0 MC
SHORT WAVE 2	4.0 - 8.0 MC
31 METER	9.4 - 9.9 MC
25 METER	11.4 - 12.0 MC
19 METER	14.8 - 15.6 MC
16 METER	17.2 - 18.2 MC

- INDICATES A RESISTANCE OF LESS THAN 1 OHM.
- \* INDICATES PARTS IN CHASSIS WIRING.
- X INDICATES WIRE WRAP/UP ON PRINTED PANEL.
- ⊥ INDICATES GROUND CONDUCTOR ON PRINTED PANEL.
- ⏏ INDICATES CHASSIS GROUND.
- ↑ INDICATES PARTS WIRED ON WAFER SWITCH ASSY.