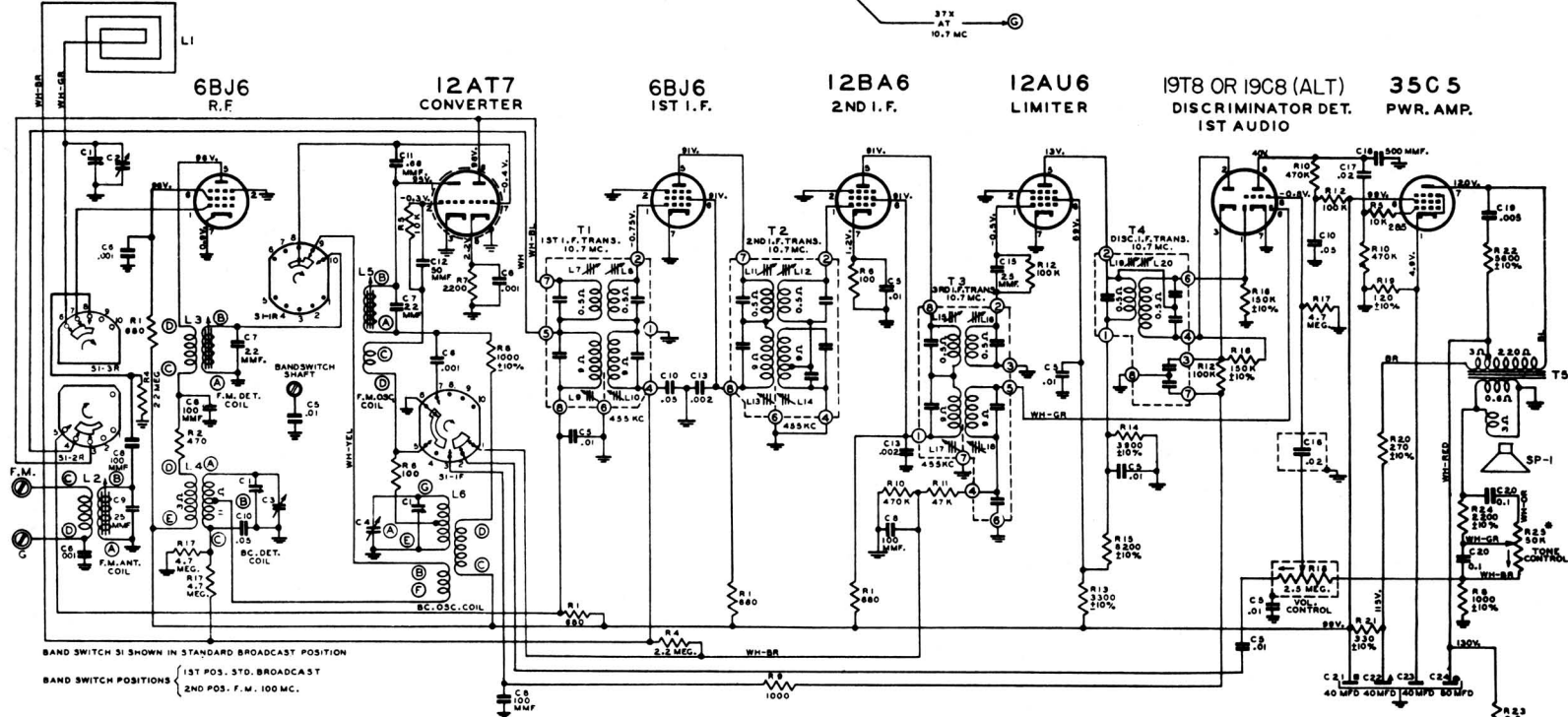
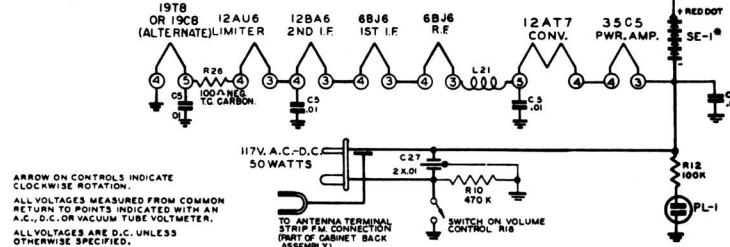
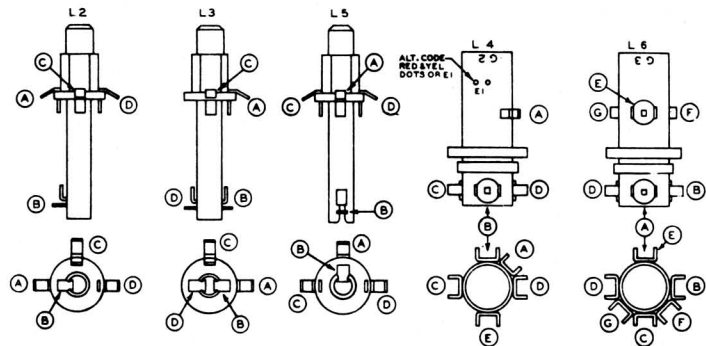


ANT. 1.5M AT 800KC 42 X FROM 800KC TO 455KC 11.8 AT 455KC 58 X AT 10.7MC 11.8 FROM 455KC TO 400V 402 AT 400V TRAIT OUTPUT



BAND SWITCH S1 SHOWN IN STANDARD BROADCAST POSITION
 BAND SWITCH POSITIONS { 1ST POS. STD. BROADCAST
 2ND POS. F.M. 100 MC.



ARROW ON CONTROLS INDICATE CLOCKWISE ROTATION.
 ALL VOLTAGES MEASURED FROM COMMON RETURN TO POINTS INDICATED WITH AN A.C., D.C. OR VACUUM TUBE VOLTMETER.
 ALL VOLTAGES ARE D.C. UNLESS OTHERWISE SPECIFIED.
 ALL RESISTORS ARE 1% TOLERANCE UNLESS OTHERWISE SPECIFIED.

AMP. MOD. I.F. FREQUENCY 455KC.
 FREQ. MOD. I.F. FREQUENCY 10.7MC.

TUNING RANGES
 540-1620 KC. STD. BC.
 88-108 MC. F.M.

⊥ DENOTES CHASSIS