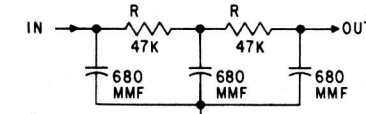
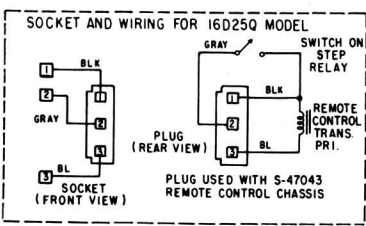


- TEST POINTS:**
- C - DETECTOR OUTPUT
 - D - VIDEO OUTPUT
 - E - I.F. A.G.C.
 - F - GROUND DURING I.F. ALIGNMENT
 - G - 3RD I.F. GRID
 - H - SOUND LIMITER PLATE
 - J - SOUND OUTPUT
 - R - PLATE OF A.F.C. DIODE



ZENITH MODELS D1810B, BU, D1811C, CU, D1812L, LU, D1814P, PU, D2010C, D2015L (CH. 16D25, U, Q)



NOTES:

- ALL VOLTAGES MEASURED FROM CHASSIS TO POINTS INDICATED.
- ALL VOLTAGES ARE D.C. UNLESS OTHERWISE SPECIFIED.
- ALL D.C. VOLTAGES TO BE MEASURED WITH A VACUUM TUBE VOLTMETER HAVING 11 MEGOHM INPUT RESISTANCE.
- ALL VOLTAGE MEASUREMENTS TO BE MADE WITH NO SIGNAL PRESENT. NORMAL SETTING OF CONTROLS AND CHANNEL SELECTOR SET TO CHANNEL 2 UNLESS OTHERWISE SPECIFIED.
- ALL CONDENSER VALUES IN MICROFARADS UNLESS OTHERWISE SPECIFIED.
- ALL CONDENSER CAPACITY TOLERANCE ±20% UNLESS OTHERWISE SPECIFIED.
- ALL RESISTORS ARE ±20% TOLERANCE, CARBON, 1/2 WATT UNLESS OTHERWISE SPECIFIED.
- RESISTANCE MEASUREMENTS SHOWN WITH COILS DISCONNECTED FROM CIRCUIT.
- COIL RESISTANCES NOT GIVEN ARE UNDER ONE OHM.
- CATHODE RAY TUBE 2ND ANODE VOLTAGE TO BE MEASURED WITH ELECTROSTATIC OR 20K MIN. OHM PER VOLT HIGH VOLTAGE METER.
- ARROWS ON POTENTIOMETERS INDICATE CLOCKWISE ROTATION.

ALIGNMENT POINTS

CIRCLED LETTERS INDICATE ALIGNMENT AND TEST POINTS

CHASSIS

FILAMENT FUSE LINK
1 1/2" LOOP OF #24 AWG COPPER WIRE

BROKEN FOR MODEL 16D25Q ONLY